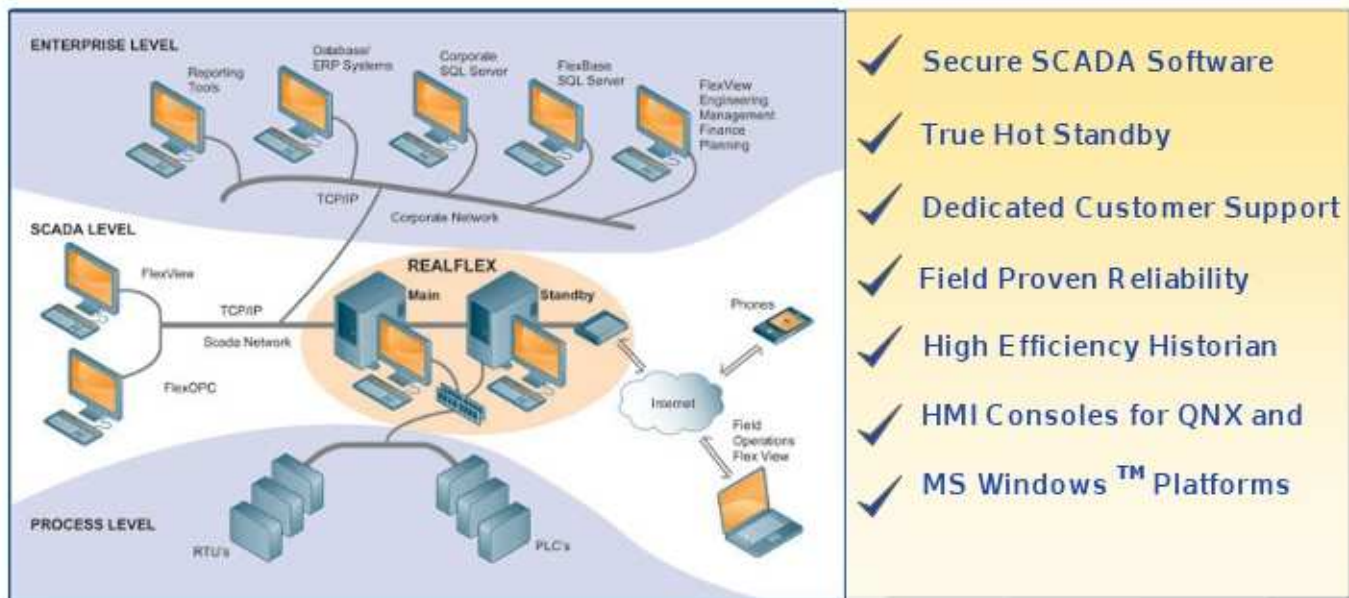


# RealFlex®

SECURE SCADA SOFTWARE

## RealFlex 6

Robust Realtime SCADA Software for Process Control and Automation



- ✓ Secure SCADA Software
- ✓ True Hot Standby
- ✓ Dedicated Customer Support
- ✓ Field Proven Reliability
- ✓ High Efficiency Historian
- ✓ HMI Consoles for QNX and
- ✓ MS Windows™ Platforms

### A Better Operating System

Security and reliability are paramount at RealFlex. We choose to run our flagship product, RealFlex 6, on the QNX 6 operating system. With QNX 6 every driver, protocol stack, filesystem, and application runs in the safety of memory-protected user space, virtually any component can be automatically restarted if it fails. This combined with our 30+ years of SCADA experience gives us unparalleled reliability.

### Security and speed

RealFlex 6 achieves superior security with the QNX6 operating system combined with dynamically encrypted communications. RealFlex 6 has a high performance SCADA engine with efficient design making it suitable for large databases. The QNX6 real-time operating system enables the products to achieve Speed, Stability and Security. Millisecond Timestamp stamping allows users to track faults with high precision.

### Low Cost of Ownership

The inherent reliability of the product means reduced maintenance costs. You are in control of updates, nothing will ever be pushed to your servers interrupting service. Our intuitive system leads to low implementation and setup time. Minimal training is needed. As always, RealFlex supports easy migration from legacy RealFlex systems minimizing costs and reducing re-commissioning time.

### Hot Standby

The true hot standby allows a fast switch over to keep the system operating 24 hours a day, 365 days a year. Hot standby provides redundancy to allow processing to continue during failure or maintenance. Control and monitoring can continue due to fast switchover. In the event of a system failover, clients are automatically connected to the backup system without any interruption.

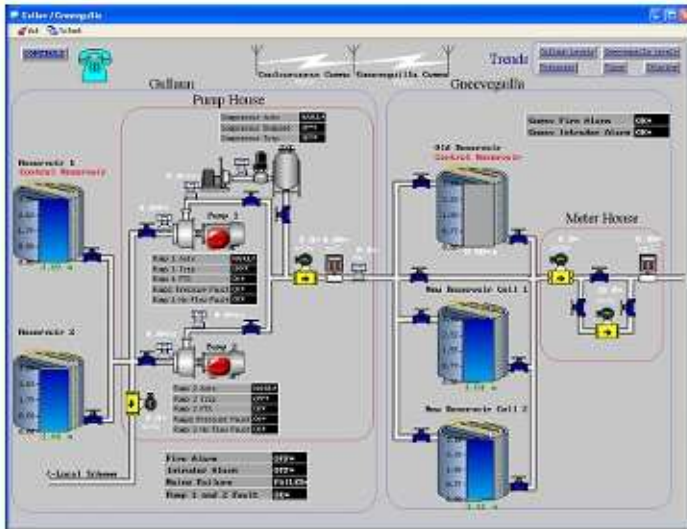
# RealFlex®

## SECURE SCADA SOFTWARE

### Best of Both Worlds

RealFlex provides the speed, stability and security of a server running on the QNX platform. Users have the option of running the HMI on QNX Photon or Microsoft Windows as required.

FlexWin clients on Microsoft Windows provides Operator Interface, SQL database, Web Page support, OPC Server and Client giving access to a huge number of applications.



### RealFlex 6 Photon Runtime HMI

### About RealFlex Technologies

RealFlex software provides customers with secure SCADA software. Our flagship product RealFlex 6.5, runs on the QNX operating system while a range of additional software gives the customer a large degree of flexibility on their system.

Servicing the SCADA market worldwide since 1982, RealFlex software is used by customers in more than 40 countries.

### International Headquarters

RealFlex Technologies Ltd.  
Limerick Business Park  
Raheen Business Centre  
Limerick  
IRELAND  
Tel: +353 (0)61 308884  
Fax: +353 (0)61 308883

Email: [info@realflex.com](mailto:info@realflex.com)  
Web: [www.realflex.com](http://www.realflex.com)

### American Headquarters

RealFlex Technologies Ltd.  
526 Kingwood Drive, Suite 310  
Kingwood, Houston  
Texas 77339  
USA  
Tel: +1 281 348-2341  
Fax: +1 281 348-2340

Email: [info@realflex.com](mailto:info@realflex.com)  
Web: [www.realflex.com](http://www.realflex.com)

### Russian Headquarters

RealFlex Technologies Ltd.  
Chernyshevskogo 88  
410004  
Saratov  
RUSSIA Tel: +7 8452  
226418  
Fax: +7 8452 226419

Email: [info@realflex.com](mailto:info@realflex.com)  
Web: [www.realflex.ru](http://www.realflex.ru)

### Customer Support System

Utilizing the RealFlex Online Support System (ROSS) and backed up by dedicated account managers, we are committed to providing first class support, engineering services and technical expertise.

### Main Features:

- True real-time SCADA software
- Hot Standby configuration
- FlexView HMI on Microsoft Windows
- Photon HMI for native QNX
- Powerful data analysis and reporting
- High Performance for large databases
- Millisecond Timestamp
- Real-time, Historical, Alarms and Event
- Calculation & CSL Script Language
- Additional FlexWin clients—FlexBase, Flex-Web, FlexOPC, RFLink
- Extensive range of standard protocols supported e.g. DNP3, IEC870 and ModBus
- Supports sending messages on alarm to pagers, cell phones, faxes or email
- Easy migration from Legacy RealFlex 4 system
- Custom Development Kit available